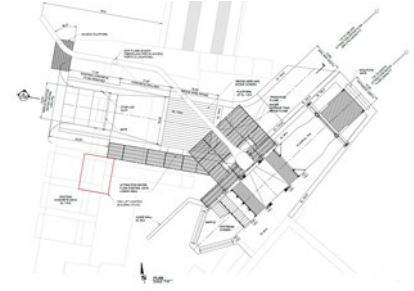
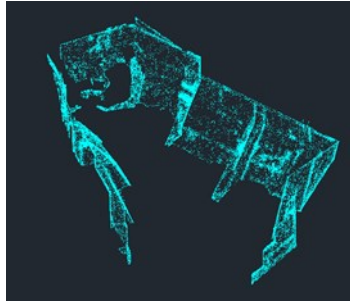




Shawmut Hydroelectric (FERC no. 2332) Fish Passage Project



Project Summary

ALDEN is providing complete designs and specifications for construction of upstream and downstream fish passage facilities at the Shawmut Hydroelectric Station.

Client

Brookfield Renewable Group

Location

Kennebec River in Shawmut, ME

Year

Ongoing

Project Overview

ALDEN is providing Brookfield Renewable Group (BREG) with agency consultation, final design and specifications, and construction oversight of upstream and downstream fish passage facilities at their Shawmut Hydroelectric Station (Shawmut). Upstream fish passage will include design and installation of a new fish lift and short fish ladder; downstream passage will consist of a modified N-U ALDEN weir integrated into the fish lift attraction water system. ALDEN is also providing permitting support.

Work Performed

ALDEN reviewed existing geotechnical, hydrologic, site constraints, and other site data, along with the 3D lased scan data collected by ALDEN on site, to finalize the conceptual fish passage designs at Shawmut. The detailed designs are being provided as 30%, 60%, 90%, and final drafts for BREG and agency review. ALDEN is also supporting BREG by addressing agency comments or concerns and attending agency review meetings following each submittal. After agency acceptance of the final detailed designs and specifications ALDEN will support BREG in the construction bidding process with theoretical costs and bid reviews. Once a bid has been accepted ALDEN will provide construction oversight and resolve any requests for information or change orders that may arise. At the conclusion of construction ALDEN will provide BREG with record drawings. Alden is preparing all federal and local permits.

Project Highlights

- ALDEN developed detailed designs and specifications for upstream and downstream fish passage for Shawmut. This will be provided in 30%, 60%, 90%, and final drafts for review.
- ALDEN is supporting BREG through the permitting and agency review process at 30%, 60%, 90%, and final review design review meetings.
- ALDEN will be providing construction bidding support and engineering consultation throughout the construction process. Construction is anticipated to begin in 2018, at the conclusion of which ADLEN will also provide record drawings.
- Three dimensional laser scan of the proposed site location.

FOR MORE INFORMATION,

Contact our Headquarters, Holden, MA at +1 (508) 829-6000 or by e-mail at : info@aldenlab.com